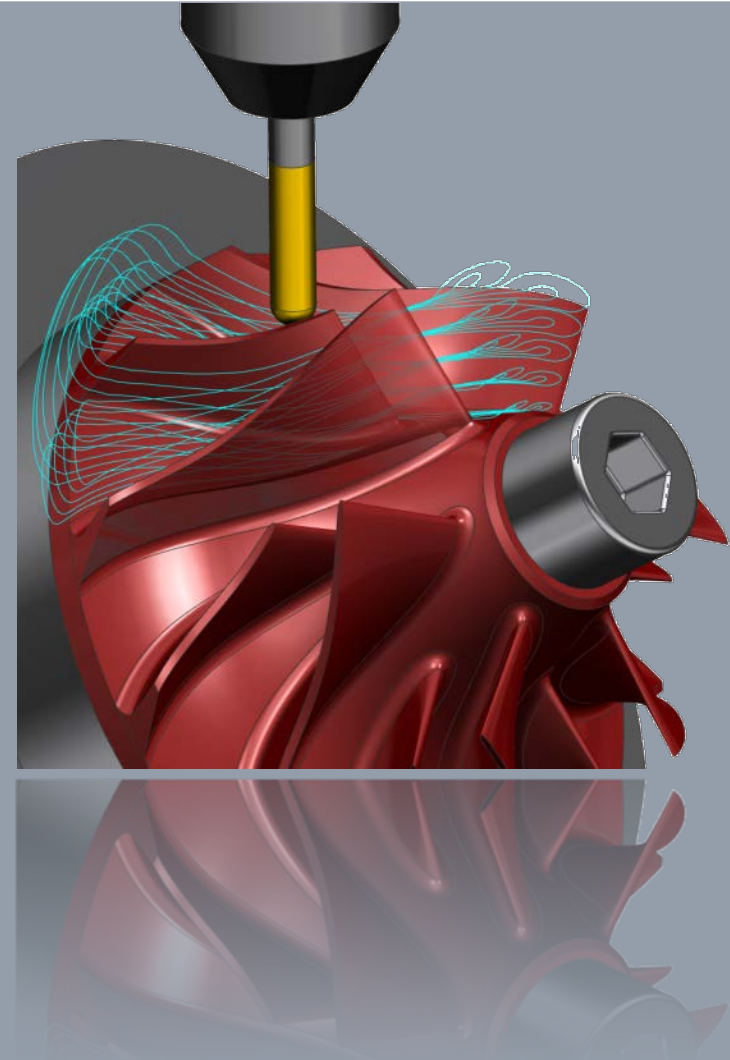


SIEMENS NX CAM

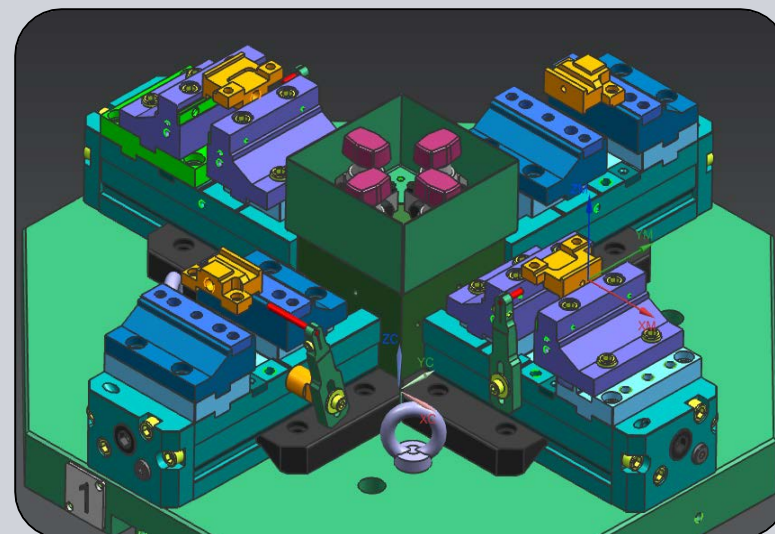


NX осигурява директен достъп до външни и импортирани данни

SIEMENS

Директно четене и работа с данни от:

- **CATIA V4 & V5**
- **Pro/ENGINEER**
- **Solid Edge**
- **SolidWorks**
- **Inventor**
- **NX**



Поддръжка на стандартни индустриални формати за максимална
използваемост на стойността на импортираната геометрия:

- **IGES**
- **Parasolid X/T**
- **STEP**
- **DXF/DWG**
- **JT**

[Демонстрация](#)

© Siemens AG 2013. All Rights Reserved.

Siemens PLM Software

NX CAM

Библиотека от инструменти и режими на рязане



Operation Navigator - Program Order

Name	To...	T...	Time	P...	Feed
NC_PROGRAM			00:16:09		
Unused Items			00:00:00		
SPEC_HOLES			00:05:30		
SPOT_DRILLING	1	<input checked="" type="checkbox"/>	00:00:03	✓	250 mm
DRILLING	2	<input checked="" type="checkbox"/>	00:01:17	✓	142.871
CANON	3	<input checked="" type="checkbox"/>	00:03:19	✓	20 mm
COUNTERBORING	0	<input checked="" type="checkbox"/>	00:00:02	✓	250 mm
HOLEMAKING			00:09:29		
SPEC_HOLES_UDE			00:01:10		

Edit Machining Data Libraries

Machining Data | Cut Method | Tool Material | Part Material | Tool Machining Data | Machines | Import

Primary Filters

Tool Material: TMC0_00001 - HSS - High Speed Steel

Cut Method: SP_00001 - MLL - END MILLING

Part Material: SP_MAT0_00001 - SP_4100 - ALLOY STEEL - ALLOY STEELS; Medium Carbon

Input Units: Millimeters

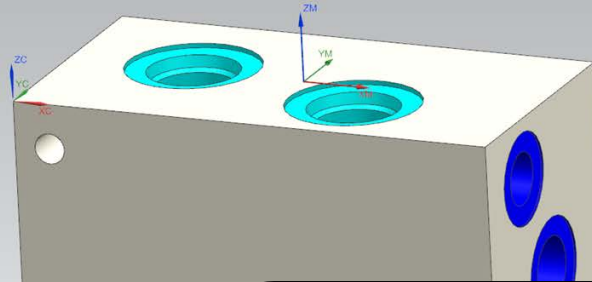
Libref	Diameter	Length	Cut Depth	Stepover	Surface Spe...	Feed per To...	Approach %	Engage %	Fl
sp_fs_00001	63.000000	4.000000	2.000000	0.000000	116.752202	0.156667	0	90	
sp_fs_00002	16.000000	100.000000	2.000000	14.000000	100.530965	0.125000	0	90	
sp_fs_00003	5.000000	5.000000	0.300000	0.100000	78.539816	0.000001	0	90	
sp_fs_00004	1.000000	10.000000	0.100000	0.100000	21.991149	0.085714	0	90	

Calculated Values

Spindle Speed (RPM)

Insert | Modify | Delete

OK | Apply | Cancel



Демо

Потребителски инструменти

Адаптивни библиотеки за
Режими на рязане

Демо

Operation Navigator - Program Or...

NC_PROGRAM

- Unused Items
- SPEC_HOLES
 - SPOT_DRILLING
 - DRILLING
 - CANON
 - COUNTERBORING
- HOLEMAKING
- SPEC_HOLES_UDE

Ástroida Spec Hole Tool 2

Tool | Shank | Holder | More

Legend

Dimensions

(D) Diameter: 24.0000

(PA) Point Angle: 118.0000

(CR) Corner Radius: 0.0000

(L) Length: 140.0000

(FL) Flute Length: 50.0000

Flutes: 1

Description

astroida spec hole tool 2

Material: HSS

Numbers

Tool Number: 0

Adjust Register: 0

Offsets

Information

Library

Library Reference

astro2

Export Tool Part File

Export Tool to Library

Update Tool from Library

Preview

Preview

Display

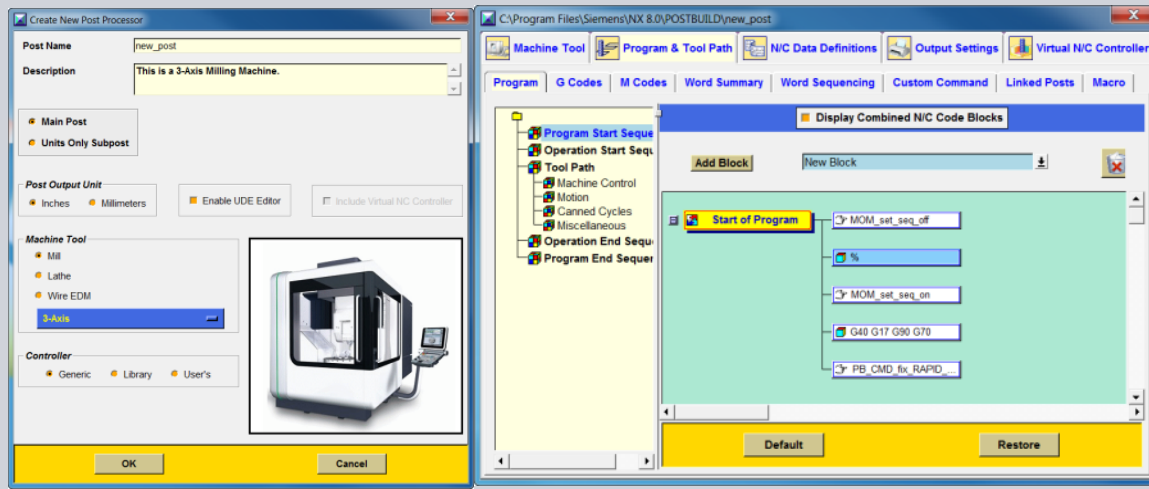
OK | Cancel

NX CAM



Пост процесирание и разработка на собствени постпроцесори

- **NX Post builder** – приложение за създаване и редактиране на постпроцесори, стандартно във всяко NX CAM/Express работно място
- Разбираем графичен потребителски интерфейс
- Работи с „drag & drop“ техника
- Богата онлайн библиотека



NX ♦ NC ♦ Postprocessor ♦ Library

Disclaimer: These post processor files are examples set up for the machine and controllers specified and are intended for modification with NX Post Builder in order to suit your specific requirements. ♦ In each case it is your responsibility to ensure that the post processor files are correct for the machine and controllers specified and are intended for modification with NX Post Builder in order to suit your specific requirements. ♦ Your downloading and use of the post processor files is subject to the confidentiality provision of the license agreement pursuant to which you obtained NX Post Builder. By downloading and using the post processor files, you acknowledge and agree that you have exclusive control of the input of data and any output generated as a result of your use of the files. You bear sole responsibility for the adequacy and adequacy of the data output, including any reliance thereon by yourself or any third party. We would like feed-back on your use of these posts and, if you have questions in respect of one of the posts from this library then GTAC may be able to provide some assistance. ♦ If you want to modify an NX post processor and don't have access to NX Post Builder, please contact UGS GTAC for further information on access to this software or alternative customization options. ♦ If you modify a post processor from the library, or create your own using NX Post Builder, you are encouraged to contribute it for inclusion in this library.



Customer Postprocessor Library

- Instructions to download**
1. Use your browser find function to search for a post
 2. Click on the name to see the files required for each post.
 3. Right click each file and "Save target as" on your local system.

- Instructions to contribute a post processor, simulation-driver or 3D-model:**
1. Download and fill out this form
 2. Upload a ZIP-file with all relevant data to the Scratch area
 3. Send the form via mail to gtac_post_library@ugs.com

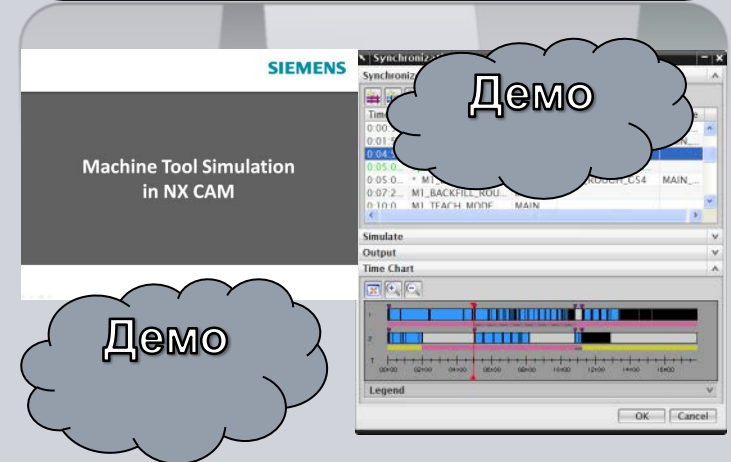
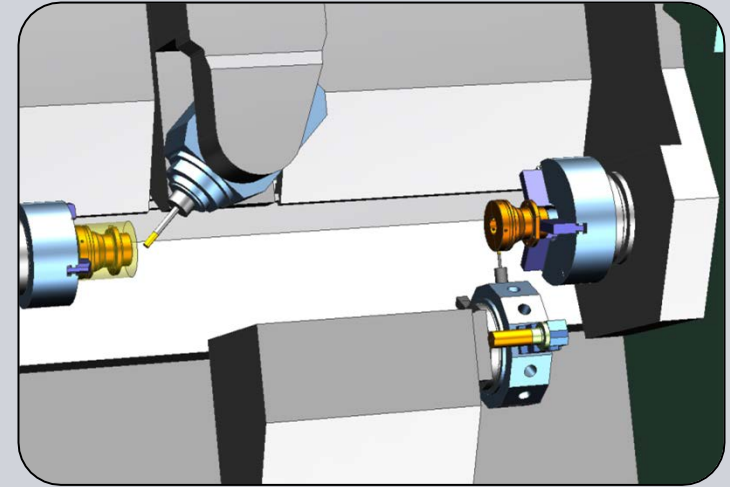
NX CAM

Струго-фрезови обработки и синхронизация

SIEMENS

Създава управляващи програми за последно поколение мулти функционални машини с фрезови, стругови и пробивни възможности, включително едновременни 5-осови обработки

- **Synchronization Manager** ви предоставя ясен графичен дисплей за всеки канал
- Автоматично генерира точна междуперационна заготовка (**IPW**) която лесно се прехвърля между фрезови и стругови обработки



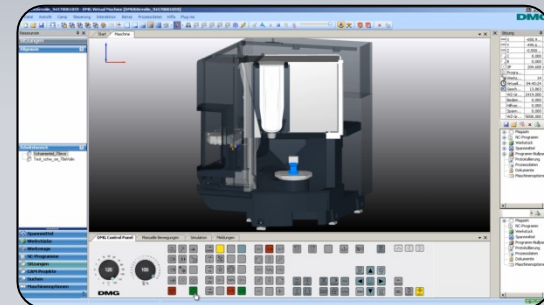
NX CAM за DMG

SIEMENS

Машинна симулация и верификация – DMG Process Chain

Предимства

- Реален процес гарантиран от DMG и Siemens
- CAM система с модерни стругова и фрезова технология
- Сертифициран постпроцесор
- Експорт на всички технологични параметри от NX CAM в DMG Virtual Machine
- Точна машинна симулация благодарение на интегрираните PLC и NC
- Висока рентабилност на вашата DMG машина



© Siemens AG 2013. All Rights Reserved.

Siemens PLM Software

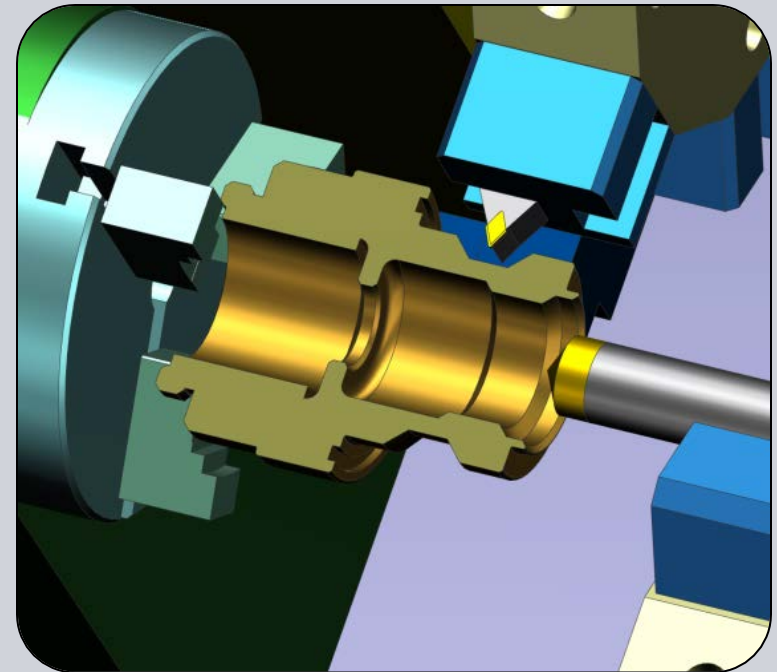
NX CAM

Машинна симулация и верификация

SIEMENS

Интегрирано постпроцесиране и проверка на NC програма.

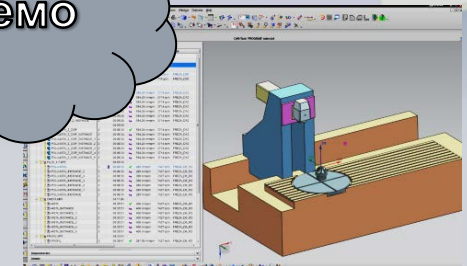
- Точна от първото качване на машината – ранно откриване на потенциални проблеми
- Елиминира скъпите тестове в производствени условия
- Без брак на машинни компоненти, детайли и приспособления!



Демо

Принципи

Демо



© Siemens AG 2013. All Rights Reserved.

Siemens PLM Software

Благодарим Ви!

www.siemens.com/plm

www.spacecad.bg